



Enhancear[®]

focused listening system

P.O. Box 6968 • Thousand Oaks • CA 91359-6968
Toll Free: 800-805-6575 • www.enhancear.com

Hear today, hear tomorrow.[™]



Owner's Manual



Enhancear[®]
focused listening system

Table of Contents



Welcome	1
Key Features	2
Additional Features	4
Battery Installation	5
Headband Adjustment	6
On/Off/Volume Controls	7
Noise Suppression	8
Listening Profiles	9
Suggested Uses	10
30-Day Guarantee	12
Contact Information	12
1-year Limited Warranty	13



Thank you for choosing the Enhancecar[®] Focused Listening[™] System.

Congratulations on the purchase of your Enhancecar[®] Focused Listening[™] System. Our innovative hearing enhancement design offers convenience, affordability and comfort. This is not a hearing aid, this is hearing.[™] We hope you will take a moment to examine this owner's manual and familiarize yourself with how to use your Enhancecar[®] Focused Listening[™] System.

Your Enhanced Hearing System Includes:



The Enhancecar[®]
Focused Listening[™]
System



Travel Pouch



AAA Batteries

1

Welcome



Enhancecar[®]
focused listening system

Key Features



Adjustable
Headband for
a Perfect Fit



Easily Accessible Battery
Compartment



Volume and Profile
Control Buttons with
Power Indication Light



Key Features



Shape-
Conforming
Headband



Focused
Listening
Microphones



Soft, Synthetic
Leather-Covered
Foam Ear Cushions



3

Key Features



Enhancear®
focused listening system



Additional Features

- One-button on and off with automatic shut-off to prolong battery life
- Two (2) AAA batteries (included) offer more than 100 hours of enhanced hearing
- Independent left and right volume controls
- Advanced signal processing technology
- Unmatched combination of hearing enhancement, flexibility, audio performance and comfortable fit
- Limited sound pressure level for added safety and comfort
- Easy selection of noise suppression to help eliminate background sounds
- Comfortable ear cushions that seal tightly around the ear to minimize ambient sound and maximize hearing enhancement
- Designed to withstand years of everyday use
- Backed by our Enhancear® 100% satisfaction, 30-Day guarantee and 1-year limited warranty (See pages 12 and 13)
- Three (3) user-selectable focused listening profiles (Elite model only)



Battery Installation

Step 1



Slide Down Battery Compartment Door

The battery compartment is located on the outside of the right (R) side earcup. Using your thumb or forefinger, press down firmly on the raised curves and slide the battery compartment door down about 1/4" toward the volume control buttons.

Step 2



Lift Open Battery Compartment Door

Place your thumbnail under the lower edge door and gently lift the lid up toward the headband to reveal the battery compartment.

Step 3



Insert Batteries and Close Battery Compartment Door

Position both AAA batteries in their individual slots. The flat (-) ends of the batteries face up toward the headband, while the raised (+) ends face down toward the volume control buttons. With batteries in place, lower the battery compartment door, then push it up toward the headband to close.

5

Battery Installation



Enhancear®
focused listening system



Headband Adjustment

Step 1



Adjust Headband Equally On Both Sides

On each side of the headband, there is an expanding section that can be pulled apart to adjust the headband for personal fit and comfort. Expand or retract the adjustable headband in equal lengths until it fits comfortably on your head over and around your ears.

Step 2



Place Unit On Head With Ear Cushions Around Ears

Place the Enhancear® Focused Listening System on your head so the earcups rest comfortably over and around your ears.

Step 3



Adjust Equally On Both Sides Until Comfortable

Expand or retract the adjustable headband equally on each side until a tight, comfortable fit is achieved.

Quick Tip:

When placing the Enhancear on your head, make sure the microphones face forward.



On/Off Volume Controls

Turning Unit On/Off



Press And Release
Either Plus (+) Button

To turn on your Enhancear® Focused Listening System, simply press the plus (+) volume control button on either the left or right side. The power indicator light will turn on. To turn the unit off, hold down either minus (-) button for three seconds until you hear the power-down tone.

Increase Volume



Plus (+) Symbol Increases
Volume Independently

To increase the volume, simply press the plus (+) button until it is at the level you prefer for each ear.

Decrease Volume



Minus (-) Symbol Decreases
Volume Independently

To decrease the volume, simply press the minus (-) button until it is at the level you prefer for each ear.

Quick Tip:

If you hear a high-frequency tone or whistle, simply adjust the headband and ear cushions for a better fit over and around your ears.

7

On/Off Volume Controls



Enhancear®
focused listening system



Noise Suppression

Noise Suppression

Your Enhancear® Focused Listening System is equipped with a noise suppression feature to help reduce distracting low-frequency background noise in certain listening environments.

To activate the background noise-suppression feature, first turn on the unit by pressing the plus (+) volume control button on either the left or right side. The noise-suppression feature can be activated by pressing and releasing the adjacent profile control button on the right side.

To deactivate the background noise-suppression feature, press and release the profile control button again.

Enhancear remembers your noise suppression setting when last turned off and will return to that setting when you next turn it on. You can activate or deactivate the noise suppression feature at anytime by pressing and releasing the profile control button.



Listening Profile Selection: Elite Model Only

In addition to all of the helpful features of the Enhancear® Basic model, your Enhancear® Elite includes two more audiometric profiles that may further enhance your hearing.

Properly place the Enhancear® on your head, over and around your ears. Turn it on by pressing the plus (+) volume control button on either the left or right side. Adjust the volume until it is at the level you prefer for each ear.

To access your Elite model's audiometric profiles menu, press and hold the profile control button until you hear a series of cascading tones. To cycle among the three audiometric profiles, press and release the profile control button.

Each time you enter a new profile, you will hear a beep tone. One beep for profile 1, two beeps for profile 2, and three beeps for profile 3.

To set or change a profile, hold the profile control button for two seconds until you hear one beep tone indicating a new profile has been selected. Your selection will be saved until you choose to change to a different audiometric profile.

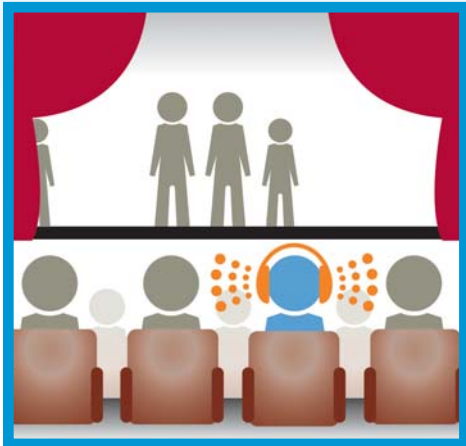
Because everyone's hearing is different, no single audiometric profile works perfectly for all people. To discover which profile works best for you, try each profile in different sound environments:

- **Profile 1 (One Beep)**
This profile works best for people with typical hearing difficulty.
- **Profile 2 (Two Beeps)**
This profile works best for people who have difficulty hearing high-frequency sounds.
- **Profile 3 (Three Beeps)**
This profile works best for people who have difficulty hearing all sounds.

If you have any questions about how to operate your Enhancear® Focused Listening System, please call us toll free at 800-805-6575.



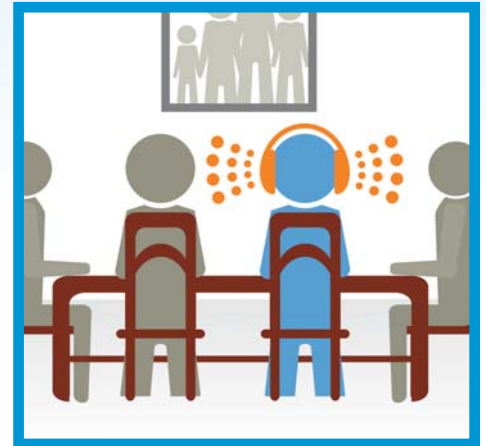
Suggested Uses



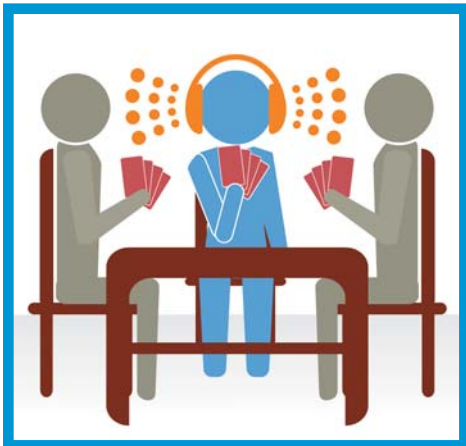
Public Gatherings



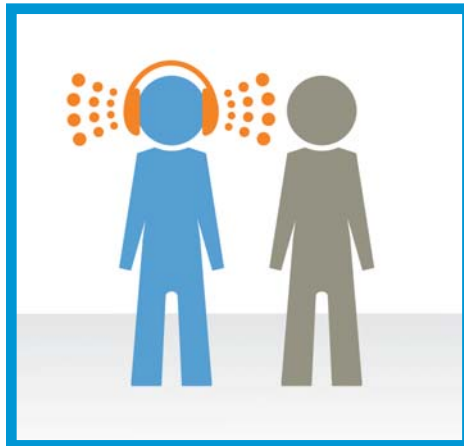
Home Entertainment



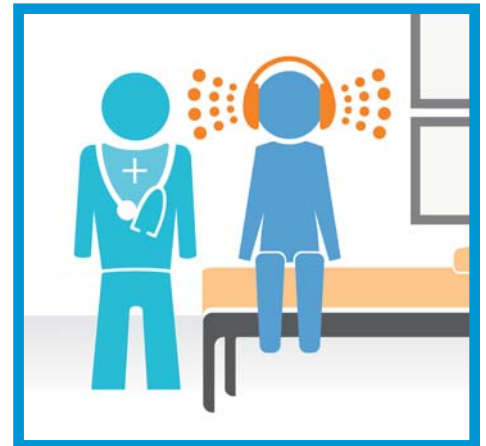
Small Gatherings



Games



Person To Person



Doctor Appointments



“Its bigger
design makes a
big difference.”



Enhancear®
focused listening system



100% Satisfaction, 30-Day Guarantee

The Enhancecar® Focused Listening System is an innovative product designed to provide people with part-time hearing enhancement in personal and social situations. Although your Enhancecar® can provide quality hearing enhancement almost anywhere and everywhere, if for any reason you are not completely satisfied, you can return it to us within 30 days after you receive it for a full 100% refund.

All we require is that you call us at 800-805-6575, or e-mail us at service@enhancecar.com and tell us that you wish to return your Enhancecar® Focused Listening System for a full 100% refund. We will then send you shipping instructions and a pre-paid label for you to put on the box for delivery back to us.

There is no need to send a copy of your receipt, or send your Enhancecar® back in its original box. (But it would be helpful if you did.)

We welcome your help to improve our products, so please let us know what you like or do not like about your Enhancecar® Focused Listening System.

Telephone

1-800-805-6575

Hours

Monday - Friday
8 am - 8 pm ET

Web Address

www.enhancecar.com

Email Inquiries

service@enhancecar.com

Mailing Address

Enhancecar
P.O. Box 6968
Thousand Oaks, CA 91359



1-Year Limited Warranty

We believe and sincerely hope that you'll be very pleased with the value, quality and performance of your Enhancecar® Focused Listening System.

However, if you happen to receive an Enhancecar® with a defect in materials or workmanship, contact us within the first year after your original purchase date. We will either repair or replace the defective part or product at no cost to you.

All we require is that you call us at 800-805-6575, or e-mail us at service@enhancecar.com. Just tell us that you wish to return your Enhancecar® Focused Listening System for repair or replacement. We will then send you shipping instructions and a pre-paid label for you to put on the box for delivery back to us.

There's no need to send a copy of your receipt, or to send your Enhancecar® back in its original box. (But it would be very helpful if you did.)

Legal Disclaimer:

We tried to keep the guarantee and warranty “fine print” as easy to read and understand as possible, but our lawyers have told us that we MUST add the following words:

THE MAXIMUM LIABILITY OF HEARING ENHANCEMENT GROUP, LLC, SHALL NOT EXCEED THE ACTUAL PURCHASE PRICE PAID BY YOU FOR THE PRODUCT. IN NO EVENT SHALL HEARING ENHANCEMENT GROUP, LLC BE LIABLE FOR SPECIAL, INCIDENTAL, CONSEQUENTIAL OR INDIRECT DAMAGES. THE WARRANTY DOES NOT COVER DAMAGE CAUSED BY BATTERIES, ACCIDENTS, OR IMPROPER USE OR MAINTENANCE.

